

MONTHLY MEMBERSHIP PROGRESS REPORT

LOCATION ARKANSAS

District 7 I

Results as of: 5/31/2023

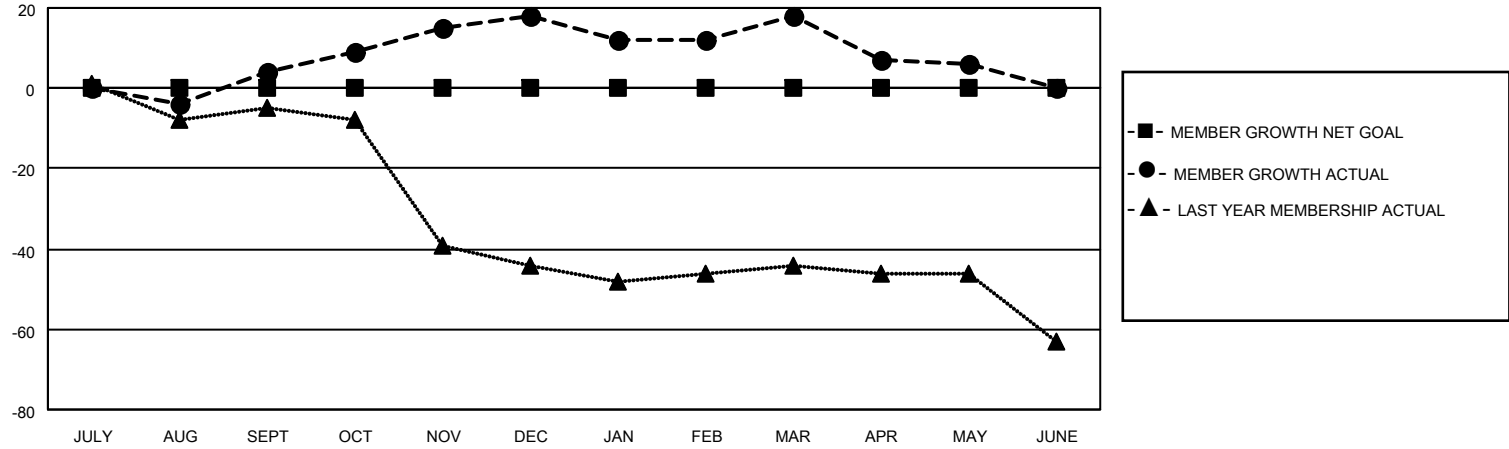
Clubs			
RESULTS FOR 2022-2023			
QUARTER	NEW CLUB GOAL	NEW CLUBS	DROPPED CLUBS
JULY/AUG/SEPT	0	0	0
OCT/NOV/DEC	0	0	0
JAN/FEB/MAR	0	0	0
APR/MAY/JUNE	0	0	0

Members			
RESULTS FOR 2022-2023			
QUARTER	MEMBER GROWTH NET GOAL	MEMBER GROWTH ACTUAL	DROPPED MEMBERS ACTUAL (including transfers)
JULY/AUG/SEPT	0	13	9
OCT/NOV/DEC	0	27	12
JAN/FEB/MAR	0	13	12
APR/MAY/JUNE	0	7	19

GOALS AND ACTUAL NEW CLUBS CUMULATIVE



GOALS AND ACTUAL MEMBERS CUMULATIVE



DROPPED CLUBS: 0	21 CLUBS OF 30 ADDED 1 OR MORE NEW MEMBERS	<p style="text-align: center;"><u>GENDER DISTRIBUTION</u></p> <p>MALE 392 (66.33%)</p> <p>FEMALE 199 (33.67%)</p> <p>NON BINARY 0 (0.00%)</p> <p>PREFER NOT TO ANSWER 0 (0.00%)</p>
<p style="text-align: center;"><u>DROPPED MEMBERS</u></p> <p>DECEASED 7</p> <p>CLUB CANCELLED 0</p> <p>OTHER 45</p> <hr/> <p>TOTAL 52</p>	<p>CLICK HERE FOR CUMULATIVE MEMBERSHIP DATA</p>	<p>TOTAL FAMILY UNIT MEMBERS 59</p> <p>FAMILY MEMBERS PAYING HALF DUES 30</p>